

Summer Camp 2021

skcamps@summers-knoll.org; 734.971.7991



Summers-Knoll Camps: We strive to nurture the whole child, challenge them, prepare them for the future, support their growth, encourage their dreams, pique their curiosity and build confidence. Our campers engage through hands-on explorations of the arts, science, athletics, and the outdoors in a safe space that nurtures campers' development. Our camp is designed with children and childhood at its center.

Justice, Equity, Diversity, and Inclusion: We strive to nurture the whole child, challenge them, prepare them for the future, support their growth, encourage their dreams, pique their curiosity and build confidence. This work begins with each and every one of us being accountable for increasing our knowledge, awareness, positive attitudes, and habits as human beings.

- Justice: We aim to treat everyone with respect and fairness.
- Equity: We aim to provide access, opportunities and advancement for all families and staff.
- Diversity: We aim to

represent people from a global perspective. We resist marginalization and exclusion of people.

- Inclusion: We aim to listen first, reflect, participate and make changes to welcome and value everyone. We encourage families to communicate with us so that we can improve our methods. Beyond a mission statement, we work diligently as a team to address difficulty with courage and integrity.



A summer of safe, healthy, and joyful ACTION: In past years, we have offered Theme, Escape, and Action Camps. This year, we are focusing on our Action Camp program exclusively. Action Camps provide children with an opportunity to engage their brains and their bodies in hands-on, exploratory learning activities that are creative and challenging. Campers will learn to cooperate, share, listen to one another, and solve challenges together as our teachers provide guidance and nurture their spirit of discovery. Campers will be in cohorts of no more than 12 children, with one lead teacher and one assistant teacher, who will stay podded with the group throughout the week. **\$325.00/week.**

Week 1: June 7 -- Fun in the Sun (entering K-4); Nature Adventures (entering 5-8); \$325.00

- *Fun in the Sun:* Come and explore the great outdoors in this camp designed for young campers. Get ready to enjoy hikes, bird-watching, animal tracking, plant identification, rocks, trails and more. Campers will enjoy learning about the natural environment with a great group of friends.
- *Nature Adventures:* If you like to get your boots muddy and enjoy nature, then this is the camp for you! Campers will be immersed in the great outdoors as they enjoy time on the trails, group games, nature-inspired art, and more, all outdoors at SK and County Farm Park.

Week 2: June 14 -- Art Around the World (entering K-4); Found Art (entering 5-8); \$325.00

- *Art Around the World:* Young artists will explore a variety of artists and art styles from around the world. This camp encourages kids to learn mixed-media and techniques used by the masters of art. Campers will leave with their very own portfolio of work by the end of the week along with a wealth of knowledge about the art world.
- *Found Art:* Inspiration abounds if you look at the world through your artist eyes. Join other makers, creatives, treasure finders, and artists for a week of mixed media and found object inspired creations.

Week 3: June 21 --Mad Scientist Rally (entering K-4); Game Design (entering 5-8); \$325

- *Mad Scientist Rally:* First, we'll create our mad scientist alter-egos and put on our magic safety goggles. Then, let the experiments begin! From fizzy potions to magnetic fields to bubbles and crystals, be prepared to get messy as we learn all about the wonderful world of science. Join us for a week of puzzles and challenges as we hypothesize about the universe and then put our hypotheses to the test.
- *Game Design:* Are you a game maker? Do you enjoy playing games, solving puzzles, and accepting challenges? If so, this is the camp for you. First, we'll try out new games together and figure out what it is that keeps us coming back to our favorites. Using what we've learned, we'll design and begin to build our own board or card games. Roll the dice, shuffle the cards, and create your own adventure during this week of gaming action. Please note that this is a screen-free camp.



Week 4: June 28 Leonardo's Challenge (entering K-4); Science and Art Explorers (entering 5-8) \$325

- *Leonardo's Challenge:* If you accept Leonardo's challenge, then join us and become an apprentice to Leonardo da Vinci himself as you develop solutions to problems using machines and the principles of physics. From structures that fly to structures that float, from painting to writing to mapmaking and beyond, young Renaissance people will have a chance to build up, take apart, and push the boundaries of what's possible.
- *Science and Art Explorers:* Using a variety of media, we'll learn about the relationships between math, science, physics, art, and creative expression as we conduct experiments, mix media, and see where our explorations take us. Whether you have a flair for the arts or you're a young scientist (or both), this camp will help you find unexpected connections and lots of fun.

Week 5: July 5 -- Athletics Around the World (entering K-4); Capoeira and Arts of Brazil (entering grades 5-8) \$325.00

- *Athletics Around the World:* Learn sports and games from around the globe and then play them with your friends. We'll learn about different cultures through games and activities and then engage in friendly competition as we learn to play new sports together.
- *Capoeira and Arts of Brazil:* Explore capoeira, Brazilian music, and Portuguese language in this camp designed for all kids. Campers will learn to play capoeira, an Afro-Brazilian martial art that is a beautiful harmony between dance, flexibility, acrobatics, cooperation and music. The experience is enriched by the Brazilian Portuguese language immersion and friendly group atmosphere. This camp requires no prior experience and is open to all ages. Arts of Brazil is taught by Lobinho of International Cordao de Ouro.

Week 6: July 12 -- Magical Myths and Legends (entering K-4); Storytelling (entering 5-8) \$325.00

- *Magical Myths and Legends:* Campers will make their own stories come to life! Explore what happens when fairytales, myths, and legends get all mixed up! Perfect for writers, illustrators, designers, and those with a flare for the dramatic!
- *Storytelling:* This is a camp for kids who like to tell stories. How do we tell our own stories? How do we find our voices? We'll look at ways others have shared stories throughout time, practice different modes of storytelling, and make our voices heard. From poetry to scrapbooks to spoken word to songs and other media, we'll explore ways to tell our stories and learn to listen, deeply, to the stories of others.

Week 7: July 19 -- Baby Yoda (entering K-4); Jedi Knights (entering 5-8) \$325.00

- *Baby Yoda:* Even the youngest Jedis can harness their inner Force! This camp is designed to teach young ones about Star Wars through crafts, games and fun! Campers will be able to enjoy making new buddies and learning about the powerful force of kindness in this camp designed to build confidence and creativity in young campers. Unlike Star Wars camps of years past, this camp will be run entirely outdoors.

2203 PLATT ROAD, ANN ARBOR, MICHIGAN 48104
T: 734.971.7991 | F: 734.971.9663 | WWW.SUMMERS-KNOLL.ORG



- *Jedi Knights*: Jedi Knights is a training program for those who are interested in gaining a deep understanding of the ways of the Force. We will journey to the farthest corners of the galaxy and encounter strange life forms who will show us new ways to connect with the Force. If you're hoping to solve the mysteries of the Jedi Quest, then this is the training camp for you. Unlike Star Wars camps of years past, this camp will be run entirely outdoors.

Week 8: July 26 -- Hogwarts (entering K-4); Hogwarts Prefects (entering 5-8) \$325.00

- *Hogwarts*: Here is your chance to enroll at the most famous wizarding school the world has ever known. Weave strange and fantastical spells as the powers of sorcery fill you from head to toe and the magical miasmic mists fill you with wonder. Enjoy classes, quidditch, and more as you bring some of your favorite stories to life. Unlike Hogwarts camps of years past, this camp will be run entirely outdoors.
- *Hogwarts Prefects*: As experienced Hogwarts students, Prefects will engage in advanced classes, create complex potions, cheer for your housemates in quidditch, go on thrilling quests at County Farm Park, and dig deep into the wizarding world. Unlike Hogwarts camps of years past, this camp will be run entirely outdoors.

Daily Schedule: To the extent possible, all camps will take place outdoors for the majority of the day.

Group activities start at 9am. For your convenience, **drop off begins at 8:30am**. Group activities end at 3:30pm. For your convenience, children are welcome to stay for extended care **until 5:30pm**.

9:00am-10:00am	group activities
10:00am-10:10am	morning snack
10:10am-10:30am	morning recess
10:30am-11:30am	group activities
11:30am-12:00pm	lunch
12:00-12:30pm	recess
12:30pm-1:30	group activities
1:30pm-1:40pm	afternoon snack



1:40pm-2:00pm	afternoon recess
2:00pm-3:20pm	group activities
3:20pm-3:30pm	clean up and go home

Snacks: Summers-Knoll School is a nut aware community. Many of our students are strongly allergic to peanuts and tree nuts. We do not allow peanuts/tree nuts in our building or camps. Campers must bring their own nut-free lunch and snacks each day. For 2021, **Summers-Knoll is *not* providing regular snacks to campers.** Camp staff may provide, on occasion, items such as popsicles, tea, etc., but will always give families at least 24 hours notice before providing food.

Payment: For summer camps, a 20% non-refundable deposit and an annual registration fee of \$15 per child is due at the time of registration. Final payments for summer camps must be made by June 1st. Payments may also be made in full at the time of registration. If you choose to cancel 31 days or more prior to your child's summer camp session, your payment will be refunded except for the 20% non-refundable deposit and the registration fee. Cancellations within 30 days of your child's start date will not be refunded. You may modify your reservation based on availability of space in a camp and only within the current summer camp season. Modifications for camps must happen by midnight on the Monday before the camp begins (in other words, six days before the camp begins). No refunds will be issued on camp reservations modified within the 30 day window.

The UltraCamp system accepts debit cards, Visa, MasterCard, and Discover. All payments must be made online. To discuss any other payment needs, please contact Kimberley Downing at 734.971.7991 or email kdowning@summers-knoll.org. A fee of \$25 will be charged for returned checks. We do not offer scholarships for camp, though financial aid for Summers-Knoll School families does apply to summer camp.

If a session is canceled midweek, campers will be credited a prorated amount for all camp days missed due to COVID-19.



Summer 2021 Frequently Asked Questions

Q: What is Summers-Knoll doing to prepare for COVID-19 this summer?

We are currently updating (and will continue to update) all of our summer 2021 policies and procedures to reflect the latest guidance, restrictions, and best practices. We are fortunate to have the guidance of the SK COVID-19 Task Force, as well as the Washtenaw County Health Department, the Michigan Department of Health and Human Services, and federal agencies and organizations.

Summers-Knoll Camps has also updated our programming and operations to reflect:

- All campers and staff wear masks at all times, except eating or drinking
- Limiting camp cohorts to 12 campers or fewer
- Daily cleaning of all campus areas and facilities
- Cleaning each area and all materials after use
- All families and staff members are required to complete a health form and agreement to policies and procedures PRIOR to attending camp each day
- Limiting the number of outside persons entering the buildings throughout the day
- Providing each camper with a personal supply box, so materials will not be shared

Q: How will drop off and pick up work?

To ensure the safety of our other families and our staff members, families will be required to stay in their cars at all times. Campers will be greeted at your vehicle by a camp staff member at drop-off time and then brought back out to your vehicle at pick-up time (unless otherwise directed by camp staff).

- Families and campers will be welcomed by staff “greeters”, who will assist your camper in and out of your vehicles
- Late arrivals and early pick-ups are to call the camp office at (734) 971-7991 upon arrival and the campers will be escorted to and from your vehicle by a camp staff member.
- All passengers who are interacting with camp staff must be wearing face masks at drop-off and pick-up.

Q: What is Summers-Knoll doing to keep campers safe?

Staff and campers are required to adhere to the following guidelines:

- Practice good hand hygiene:
 - ◆ Entering the facility
 - ◆ Before and after eating
 - ◆ Before and after preparing food/drink
 - ◆ Before and after medication administration
 - ◆ After using the toilet
 - ◆ After coughing, sneezing, or blowing their nose
 - ◆ After playing outdoors
 - ◆ Before and after group activities
- Complete daily health screening

2203 PLATT ROAD, ANN ARBOR, MICHIGAN 48104
T: 734.971.7991 | F: 734.971.9663 | WWW.SUMMERS-KNOLL.ORG



- Wear a clean and well-fitting mask
- Clean surfaces used by campers and staff members throughout the day
- Ensure campers are following safe mask etiquette and social distancing guidelines
- Manage camper mealtimes, ensuring all are safely distanced and not sharing food
- Eating lunch and snacks outside in order to minimize unmasked time indoors
- Spending as much time outdoors as possible, where transmission risk is lower
- Staff are dedicated to one camper cohort throughout each weekly session
- Following the Summers-Knoll School COVID-19 Decision Tree, which offers clear guidelines on how to proceed when someone presents with symptoms of illness

Q: What is Summers-Knoll’s camp plan if a camper travels internationally?

We require all campers to quarantine (stay home from camp) for ten days following international travel.

Q: What are the camp expectations regarding travel and gatherings in the week leading up to and during a child’s participating in summer camp?

Summers-Knoll expects that all campers and families will adhere to all county, state, and national requirements and recommendations regarding travel and gatherings. As of the time of this writing (2/28/21), the [current Washtenaw County order](#), as well as the [State of Michigan order](#), permit indoor gatherings of up to 10 people and outdoor gatherings of up to 25 people. Summers-Knoll camps strongly recommends campers be masked at indoor and outdoor gatherings. Summers-Knoll also expects families and campers to follow all [CDC guidelines for gatherings and events](#) during the week leading up to and during the camper’s participation in camps.

Q: What is Summers-Knoll’s camp plan if a camper or staff member is exposed to COVID-19, presents with COVID-19 symptoms or, tests positive for COVID-19?

Summers-Knoll takes guidance from local, state, and federal experts and agencies, as well as the COVID-19 team of experts on our own Task Force. SK will have a designated staff person with the responsibilities of monitoring and conducting cleaning/disinfecting, safe arrival/ dismissing, and other support to maintain adherence to these guidelines.

Staff members and caregivers are encouraged to talk to their own and their children’s healthcare providers about their individual risk factors for COVID-19 and the risks of working at or attending a camp.

Summers-Knoll will also ensure that the camp has updated contact information for all staff and families and the ability to rapidly communicate information.

Campers sick at home

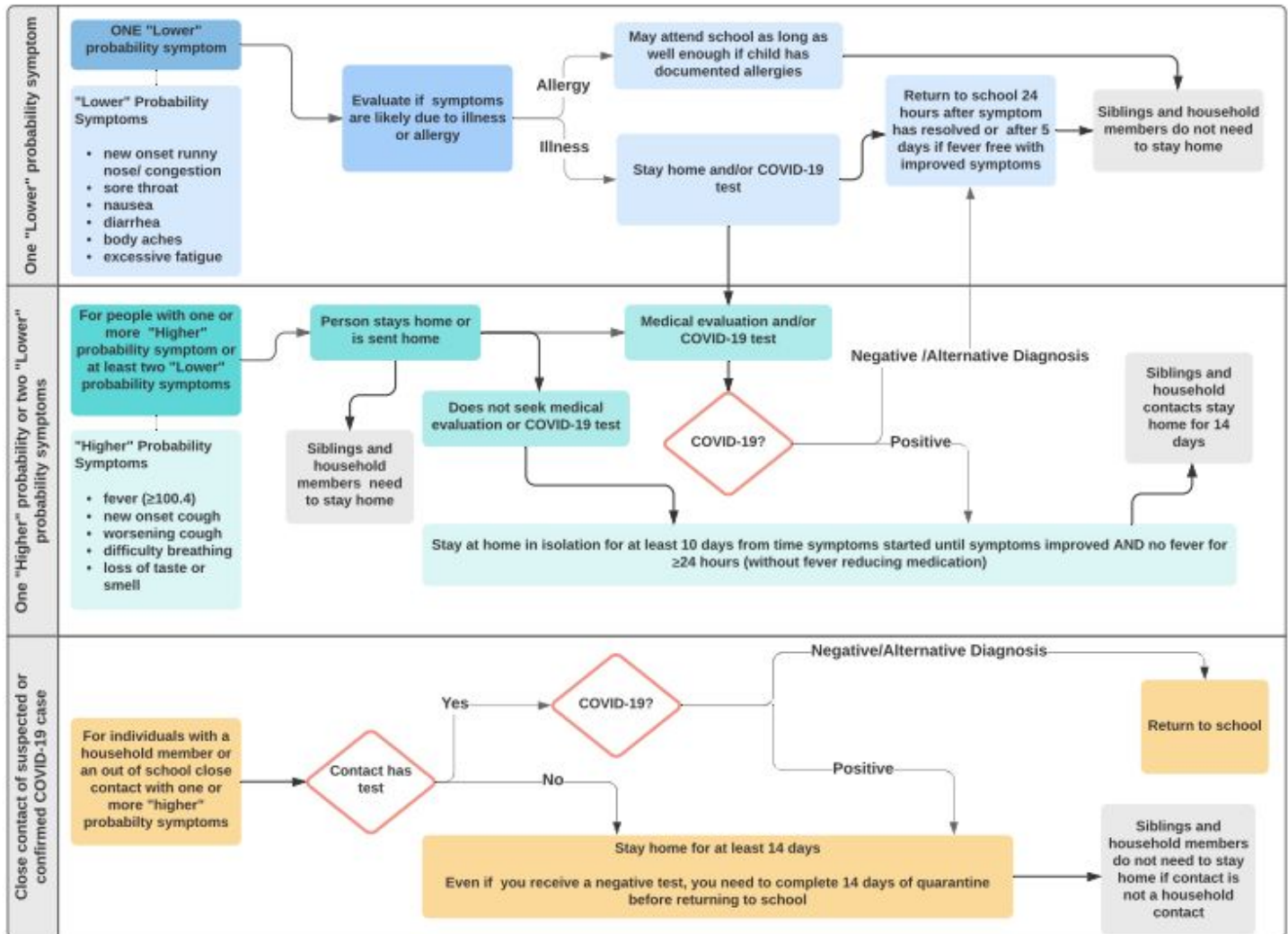
If a camper has symptoms of COVID-19 (fever or chills, cough, shortness of breath/difficulty breathing, fatigue, muscle or body aches, headache, new loss of taste or smell, sore throat, congestion or runny nose, nausea or vomiting, or diarrhea) and is staying home sick and has



answered “yes” to any of the following questions, the camp will consider requesting a COVID-19 test before the student returns to camp.

1. Have you (camper) or anyone in your household traveled outside of the state of Michigan in the last 14 days?
2. In the last 14 days, have you been in close contact (15 minutes or more, fewer than 6 feet apart) with someone that has tested positive for COVID-19?
3. Is anyone in the student's household showing symptoms of COVID-19 (symptoms listed above)

Campers will follow the Summers-Knoll COVID-19 Decision Tree to determine next steps, as well.

COVID-19 DECISION TREE FOR SUMMERS-KNOLL SCHOOL

Campers who become sick at camp

Campers who shows signs of illness or have a temperature of 100.4 or higher will be sent home from camp. The camp will call the parents/guardians to arrange immediate pick up of the sick child. The child will be quarantined in the First Aid room until the parent/guardian picks the child up from school. If a student is sent home with symptoms of COVID-19 (fever or chills, cough, shortness of breath/difficulty breathing, fatigue, muscle or body aches, headache, new loss of taste or smell, sore throat, congestion or runny nose, nausea or vomiting, or diarrhea) and is staying home sick and has answered "yes" to any of the following questions, the school will consider requesting a COVID-19 test before the student returns to camp:



1. Have you (camper) or anyone in your household traveled outside of the state of Michigan in the last 14 days?
2. In the last 14 days, have you been in close contact (15 minutes or more, fewer than 6 feet apart) with someone that has tested positive for COVID-19?
3. Is anyone in the student's household showing symptoms of COVID-19 (symptoms listed above)

Campers who test positive for COVID-19

If a camper tests positive for COVID-19, they will be required to quarantine at home. Their camp cohort (including staff) will also be required to quarantine at home (as close contacts) for the duration of the camp session and after. Camp leadership will work closely with the Washtenaw County Health Department to determine what additional actions need to be taken.

A member of the camper's household tests positive for COVID-19

If a member of a camper's household tests positive for COVID-19, the parent/guardian is required to notify the camp. The camper, as a close contact, will need to stay home from camp for the duration of the camp session and complete a 14 day quarantine period before returning to any subsequent camp session.

First Aid Room

The First Aid room will be used as the quarantine room until the sick child is picked up from school. Staff members who interact with sick children in this room will wear additional personal protective equipment (PPE), including, in addition to a face surgical mask, a face shield and gloves. N95 masks will be provided for any staff in the presence of a camper using aerosolized items such as inhalers. The sick child will wear a surgical mask. To the extent possible, the window will be kept open when there is a sick child in that room.

Staff Illness

Any staff member that is home or goes home due to illness must fill out the new "illness reporting form for staff." Staff members who show any signs of illness may not come to camp. If the symptom is something such as a migraine, that is not communicable, that must be reported, too.

If a staff member exhibits symptoms of COVID-19 (fever or chills, cough, shortness of breath/difficulty breathing, fatigue, muscle or body aches, headache, new loss of taste or smell, sore throat, congestion or runny nose, nausea or vomiting, or diarrhea) and is staying home sick and has answered "yes" to any of the following questions, the camp will consider requesting a COVID-19 test before the staff member returns to school:

1. Have you or anyone in your household traveled outside of the state of Michigan in the last 14 days?
2. In the last 14 days, have you been in close contact (15 minutes or more, fewer than 6 feet apart) with someone that has tested positive for COVID-19?



3. Is anyone in the staff member's household showing symptoms of COVID-19 (symptoms listed above)?

Staff member tests positive for COVID-19

If a staff member tests positive for COVID-19, the camp will notify the Washtenaw County Health Department, the SK COVID-19 Task Force, and all close contacts (the entire cohort) immediately. The staff member, as well as the close contacts (campers) will be required to quarantine at home.

Before the staff member returns, the school may require two negative COVID-19 tests at least 24 hours apart.

In case of exposure (camper or staff member)

If a staff member or camper has been in close contact with a known case of COVID-19 (within 6 feet distance for 15 minutes or more), the camper or staff member may not come to camp until the completion of their quarantine period.

Known case of COVID-19 in the camp

In the event of a known case of COVID-19 in the camp, the case's cohort (campers and staff) will be notified and required to quarantine at home. The rest of the families on campus that week will be notified of a case in the camp. The school will work with the SK COVID-19 Task Force as well as the Washtenaw County Health Department to determine action steps based on the circumstances of the case.

Cleaning of contaminated areas

The classroom or other contaminated areas will be left for 24 hours before cleaning crews begin their work to minimize the risk of airborne particles. Professional cleaning crews will wear a surgical mask, gloves, and a face shield when cleaning any contaminated areas, such as the classroom.

Q: What is Summers-Knoll's camp plan if a session is canceled midweek due to COVID-19?

Campers will be credited a prorated amount for all camp sessions canceled due to COVID-19.

Q: Will lunch and snacks be provided this year?

- *Summers-Knoll will not be serving snacks to campers this summer.* Other individual summer treats may be provided (popsicles, iced tea, etc., as will be communicated during the individual camp sessions). All campers must bring their own food from home, including snacks. Campers will eat lunch and snacks outdoors (except in cases of inclement weather).